



TV choice by Sanjida O'Connell

Sanjida O'Connell is a zoologist who also produces and presents science and natural history programmes.

WILDLIFE HIGHLIGHTS: 14 MAY TO 16 JUNE

THUNDERBEAST

NAT GEOGRAPHIC, WEDNESDAY
17 MAY, 7PM

Bison once roamed the plains of America's West in their millions, but by 1908 only 1,000 survived. This film follows a bison calf's struggle for survival in Yellowstone National Park.

SHARK SEX

ANIMAL PLANET, SATURDAY
20 MAY, 9PM

You can see commissioning editors' eyes light up. Two best-selling topics – sharks and sex – in one programme! Pacific Ocean grey sharks have never been filmed mating, until now.

NATURE'S STEALTH FIGHTER

ANIMAL PLANET, SATURDAY
20 MAY, 10PM

Barn owls fly slowly and silently as they quarter the fields for voles. In this documentary, experts analyse their flight with the same technology used to design the Lockheed stealth aircraft.

RAISING BABY IWANI

ANIMAL PLANET, SUNDAY 21 MAY,
7PM

Primate keeper Christine Tintinger's raises Iwani, a six-week-old Siamang Gibbon whose mother has rejected him, at Auckland Zoo, until Christine is finally able to engineer a reconciliation between Iwani and his family months later.

KING KOALA

ANIMAL PLANET, SUNDAY
28 MAY, 7PM

Arnie the koala is a dominant male. The film follows the ups and downs of his life until his Australian eucalyptus forest home is threatened by developers planning to log it.

GORILLAS REVISITED WITH SIGOURNEY WEAVER

US ANIMAL PLANET, 11 JUNE, 8PM

Twenty years ago, Sigourney Weaver played primatologist Dian Fossey in the movie, *Gorillas in the Mist*. Now, for the first time, she returns to visit the gorillas she met in the Virunga Volcanoes in Rwanda in this moving and informative film.

Cooling towers of a power station, where electricity is generated by the burning of fossil fuels. But the carbon dioxide produced is contributing to global warming – and disaster.

Maxmillian Stock Ltd/Oxford Scientific (OSF)



PICK OF THE MONTH

Unleashing the climate monster

CLIMATE CHAOS

BBC2, WEDNESDAY, 24 MAY, 31
MAY. TIME TBC

"David has come out all guns blazing on global warming," says producer Jeremy Bristow. Sir David Attenborough, who previously has always declined to comment on conservation issues, has now become a vocal defender of the planet. He says, "there is no question that global warming is happening. And there is no doubt that it's been caused by human populations."

In *Climate Chaos*, Sir David explores how we have reached the anthropocene era – a period where we're altering the climate – and what the consequences will be if we do not attempt to control the

"There is no question that global warming is happening. And there is no doubt it's been caused by human populations."

situation. If we switched off all the lights right now, as Bristow puts it, the world would still carry on reacting to carbon dioxide. A global powercut is unlikely to happen unless we are hit by a meteorite, so what will occur if we do carry on pumping out carbon?

This is when we discover "the monsters behind the door," says Professor Stephen Pacala, a climatologist from Princeton

University. We are, he believes, heading for a tipping point, a point of no return. Right now there are 380 parts per million (ppm) of carbon in the atmosphere. In 1840, there were 280 ppm. The tipping point will be 450-500 ppm. "I get vertigo looking at those figures," says Bristow. And the monster we may just unleash is global climate catastrophe, which, based on Pacala's research, would wipe out life on earth and from which the planet could take hundreds of thousands of years to recover.

Sir David speaks out on climate change.



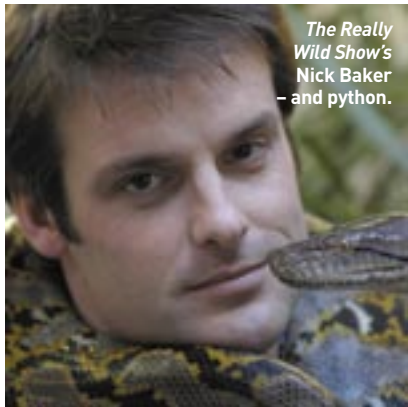
BBC

SPRINGWATCH

BBC2, MONDAY TO THURSDAY, 29 MAY – 16 JUNE, 8PM

Spring this year seemed a long time in coming yet this is not the overall picture emerging from the past 300 years of observations. Last year *Springwatch*, the live wildlife series presented by Kate Humble, Simon King and Bill Oddie, encouraged us to collect information on the signs of spring across the UK. The 2005 findings confirmed spring's unseasonably early appearance.

This year, Kate and Bill will be back on the farm in Devon, which has 50 cameras trained to spy on the secret lives of animals from blue tits to barn owls to badgers. Simon King will be bringing us updates from Shetland on otters and oystercatchers and we'll follow family dramas across Britain, such as red squirrels in Anglesey and red kites in the Midlands. The presenters will also be encouraging us to take a few deep breaths in our very own Breathing Places (see p46).



The Really Wild Show's
Nick Baker
— and python.

**THE REALLY WILD SHOW
SPRINGWATCH SPECIALS**

BBC1, FRIDAY 2 JUNE, FRIDAY 9 JUNE, FRIDAY 16 JUNE, 5PM

The Really Wild Show comes to an end this June. The children's series, which has been running for 21 years, kick-started Chris Packham's career back in the days when he was a Billie Idol wannabe with a bird-watching addiction. Currently presented by Michaela Strachan, Nick Baker and Steve Backshall, the show's swansong will be to link up with *Springwatch* and explore why the Devon farm is such a wildlife haven. As Steve says, "It's gut wrenching for the show to be pulled. It will be the first time in history the BBC will have nothing about animals and the environment for kids."

Radio choice

by Paul Evans Paul Evans is a writer and radio broadcaster.

NATURE

MONDAYS 9PM (REPEATED TUES 11AM).



With its, "no job too big, no payment too small" philosophy, *Nature* continues to tackle big issues by concentrating on what's happening on the ground to wildlife and people. For instance: what is the future for whale and dolphin conservation after the recent International Whaling Commission's meeting and what do pro and anti whaling factions in Japanese society think about it? This is a real behind-the-headlines look at one of the most emotive and complex issues in conservation.

A-Z OF WILDLIFE

FUN RADIO, WEEKDAYS 16.50PM,
SATURDAYS 10.10AM

If you have little-uns who like wildlife but reckon Radio 4 is the audio equivalent of a diet of sprouts, why not sneak over to the kids station Fun Radio – on DAB digital radio, also available on selected cable and satellite services and online at www.funradiolive.com – and let them listen to Jody Bourton's *A to Z of Wildlife* with facts and things to do for 8-10 year olds. L is for lyrebird, O is for oak trees, V is for Venus fly-traps, Z is for zzzz, now they're listening to this you can take a nap.

LIVING WORLD

SUNDAY 18 JUNE, 6.30 AM



Imagine waking early on a Sunday morning, sun streaming through a gap in the curtains and the dawn chorus in full swing begins to penetrate your bleary consciousness. Reach out and switch the wireless on and, what's this? Another dawn chorus but a very different one. *Living World* comes from Blacktoft Sands in East Yorkshire where the River Ouse meets the Humber estuary. Here, in the reedbeds, is a unique chorus of birds: warblers, water rails, even bitterns.

Presenter Lionel Kellaway goes squelching through the wetlands with the nature reserve warden as top wildlife recordist Chris Watson (see p56) captures the wonder of the singing reedbeds, while you, in your bed, get the local sparrows in one ear and booming bitterns of Blacktoft Sands in the other. Glorious – and what Sunday mornings were made for.

GOING OUT

The top exhibitions & events

Learn about marine life (above: a blue girdled angelfish) and visit the newly-launched interactive Explorocean zone at the National Marine Aquarium, Plymouth.

ART EXHIBITIONS**WILDLIFE PHOTOGRAPHER OF THE YEAR 2005**

Until 23 April: Natural History Museum, London. Until 1 May: Scotland Street School Museum ☎ 0141 287 0512; Think Tank, Birmingham ☎ 0121 202 2222, www.thinktanc.ac; Kendal Museum, Cumbria; ☎ 01539 733333, www.kendalmuseum.org.uk; Aberystwyth Arts Centre ☎ 01970 622887, www.aber.ac.uk/artscentre

LYNDSEY SELLEY An exhibition of prints by the wildlife artist. 22-23 April: Great Fosters Hotel, Egham, Surrey. ☎ 01663 735026; www.wildlife-artist.com

EVENTS

EXPLOROCEAN The opening of a new three-floor zone at Plymouth's aquarium, featuring a range of hands-on exhibits, including a climate lab and 3D theatre. National Marine Aquarium, Plymouth. Tickets start at £5.25. ☎ 01752 600301; www.national-aquarium.co.uk

EASTER AT COLCHESTER ZOO A programme of activities for all the family, including a golden egg hunt and a chance to get involved with the 2006 Save the Rhino Campaign. 1-17 April: Colchester Zoo. ☎ 01206 331292; www.colchester-zoo.com

THE MAMMAL SOCIETY EASTER CONFERENCE

The latest on British mammals with talks on water shrews, polecats, badgers, red squirrels, otters and more. 21-23 April: Queen's University, Belfast. ☎ 0207 350 2200; www.mammal.org.uk

DAISYCHAIN LIVE A new indoor event giving the chance for traders, government bodies and community organisations to exhibit greener solutions for everyday life. 22-23 April: Three Counties Showground, Malvern. ☎ 01885 488168; www.organicevents.co.uk

PETRELS, PERMAFROST AND CLIMATE CHANGE

Learn all about climate change at the latest Earthwatch lecture with experts Rob Thomas and Peter Kershaw. 27 April: Royal Geographical Society, London. ☎ 01865 318856; www.earthwatch.org

BLUEBELLS: EXPLORING BRITISH WILDLIFE

An online survey organised by the Natural History Museum. Volunteers are needed to find, identify and record bluebells to document their distribution and discover when and where they start flowering. Find the survey form at www.nhm.ac.uk/bluebells